

Product information presented here reflects conditions at time of publication. Consult factory regarding discrepancies or inconsistencies.

## MODEL 2732HF

### PRODUCT FEATURES

### 2 HP Grinder Pumps

**60 Hz**

visit our web site:  
zoellerpumps.com

#### APPLICATIONS

- Low pressure sewer systems
- High head sewage systems
- Domestic, commercial, wastewater and sewage

#### MATERIAL FEATURES

##### PUMP:

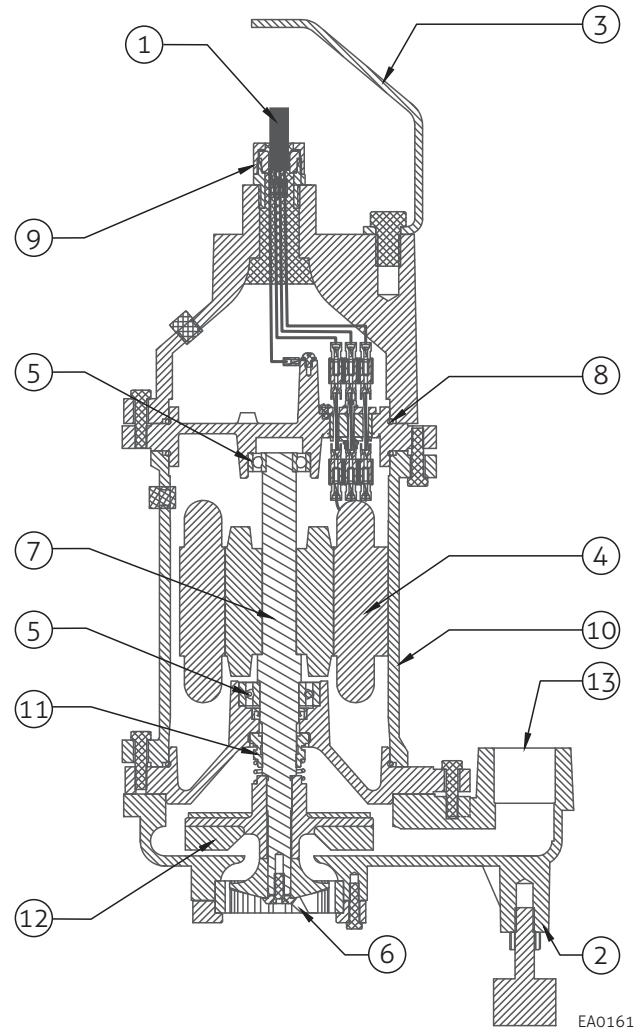
- Hardened 440 stainless steel (Rockwell 55-60) shredding ring and cutter
- 1-1/4" NPT discharge
- Single silicon carbide mechanical seal with secondary lip seal
- Cast iron ASTM A48 Class 30
- Attaching hardware - 304 stainless steel
- The cord seal is epoxy-potted for superior moisture resistance and anti-wicking
- Ductile iron impeller for superior quality and long life

##### MOTOR:

- 2 HP, 3450 RPM
- 3 Phase - 380 Volt
- Stator - Class B insulation and lead wires Nema B design
- Oil-filled motor for better cooling and lubrication
- Housing - cast iron
- Power cable length - 30' (9 m)
- Ball bearings - upper and lower high carbon chromium steel

#### FEATURES

1. 30' (9 m) power cable.
2. Cast iron support legs enable the pump to be free-standing.
3. Stainless steel lifting bail.
4. Stator - Class B insulation and lead wires Nema B design. Class B motor insulation is double-dipped and baked.
5. Upper and lower high carbon chromium steel ball bearings.
6. Stainless steel shredding ring and cutter hardened to Rockwell 55-60.
7. Stainless steel shaft and hardware resist corrosion.
8. Buna-N O ring seals.
9. Triple sealed design compression grommet - outer jacket seal epoxy potted - inner conductor seal.
10. Cast iron ASTM A48 Class 30 strength.
11. Single silicon carbide mechanical seal with secondary lip seal.
12. Semi - open vortex impeller design, fully balanced with integral pump-out vane to clear debris.
13. 1-1/4" NPT discharge. Concentric pump housing with centerline discharge reduces radial loading for longer bearing and shaft seal life.



# MODEL 2732HF

## TECHNICAL DATA

### 2 HP Grinder Pumps

<b>MODELS:</b>	<input type="checkbox"/> 2732HF
<b>MODE:</b>	NON-AUTO
<b>PUMP NAME PLATE HORSEPOWER:</b>	2
<b>MAXIMUM KW INPUT:</b>	3.2
<b>STANDARD IMPELLER DIAMETER:</b>	4.755" (120.8 mm)
<b>DISCHARGE SIZE:</b>	1-1/4" NPT

<b>IMPELLER TYPE:</b>	SEMI-OPEN	<b>SINGLE SEALS:</b>	STANDARD
<b>CUTTER &amp; PLATE:</b>	440 C SS HARDENED TO ROCKWELL 55-60	<b>MOTOR DESIGN LETTER:</b>	NEMA B
<b>PUMP NET WEIGHT:</b>	93 lbs. (42 kg)	<b>POWER CORD LENGTH: ft (m)</b> <b>(30' [9 m] STANDARD)</b>	<input type="checkbox"/> 50' (15.2 m)
<b>O RINGS:</b>	BUNA-N	<b>POWER CORD:</b>	14 GAUGE STOW
<b>MOTOR SHAFT:</b>	SS410	<b>STATOR &amp; LEAD WIRES INSULATION:</b>	CLASS B
<b>RPM:</b>	3450	<b>MAXIMUM STATOR TEMPERATURE:</b>	266 °F (130 °C)
<b>MOTOR TYPE:</b>	SUBMERSIBLE		

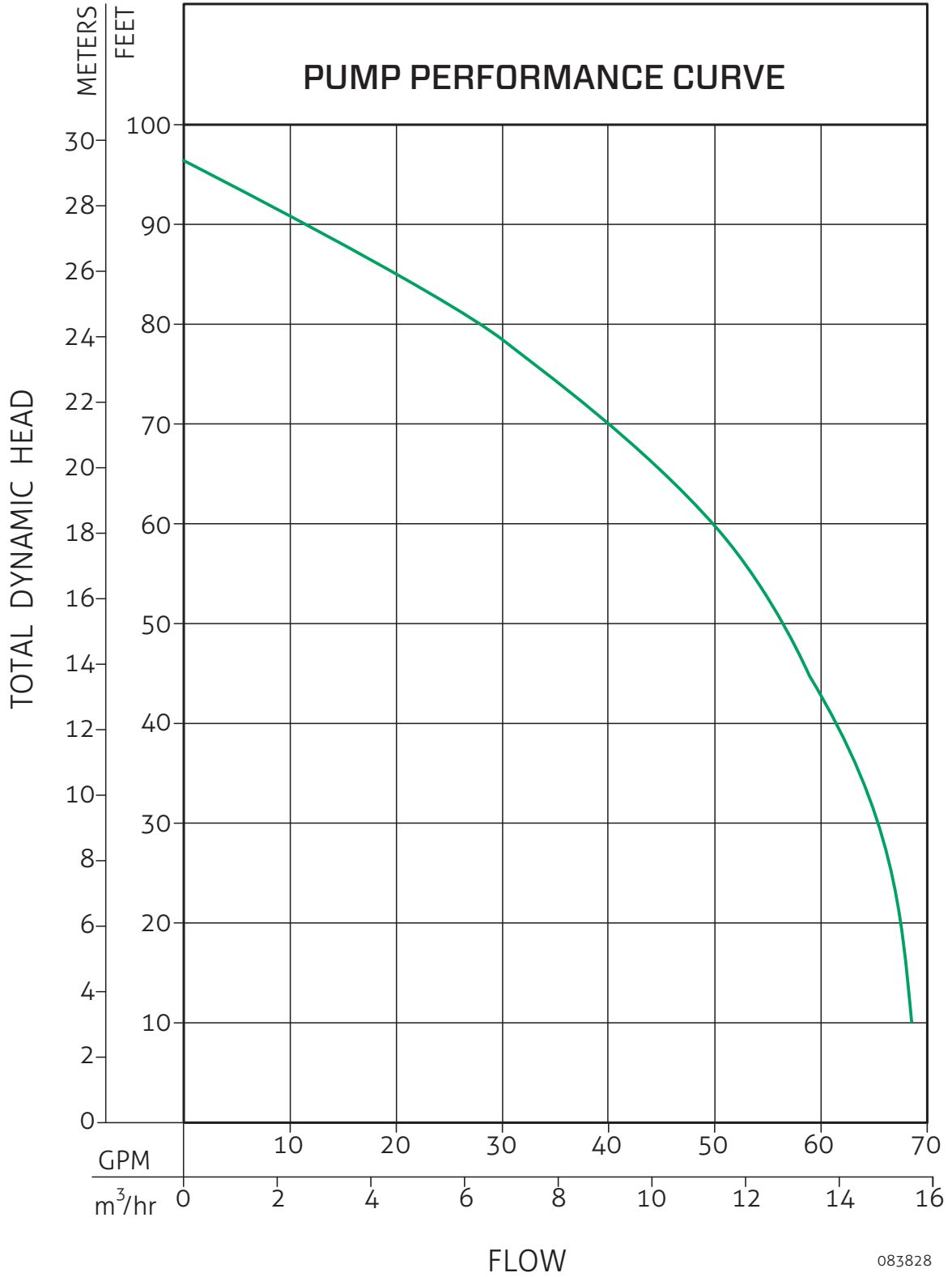
<b>SHAFT SEAL CONSTRUCTION:</b>	<b>STANDARD</b>	SILICON CARBIDE/SILICON CARBIDE
<b>STANDARD SENSING DEVICES</b>	<b>MOTOR THERMAL SHUTOFF</b>	--
<b>IMPELLER MATERIAL</b>	<b>2732HF</b>	STANDARD DUCTILE IRON
<b>IMPELLER TRIM:</b>	<input type="checkbox"/> <b>OPTIONAL</b>	DESIGN POINT: ____ GPM @ ____' TDH, IMPELLER DIA. ____"
<b>MAXIMUM WATER TEMPERATURE:</b>		104 °F (40 °C) Continuous, 140 °F (60 °C) Intermittent

MODEL	HP	<input type="checkbox"/> 380V / 3 PH	
		FLA	LRA
2732HF	2	5	--

## RESERVE POWERED DESIGN

For unusual conditions a reserve safety factor is engineered into the design of every Zoeller® pump.

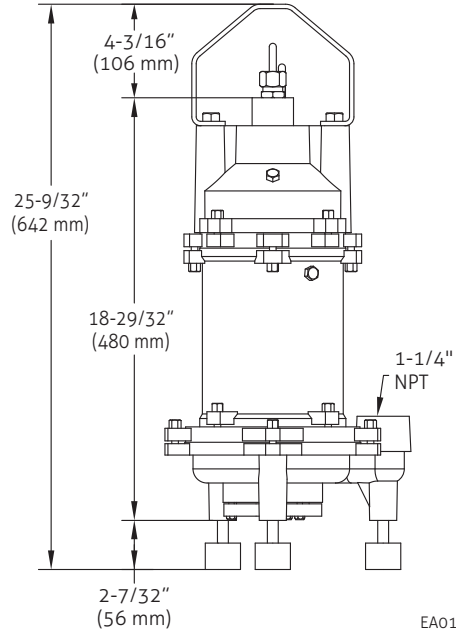
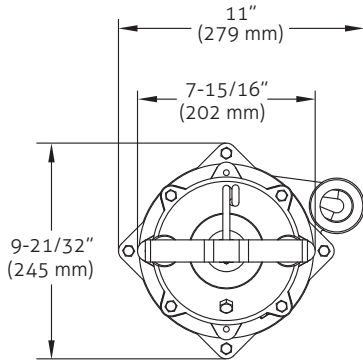
**MODEL 2732HF**  
**PERFORMANCE CURVE**  
2 HP Grinder Pumps



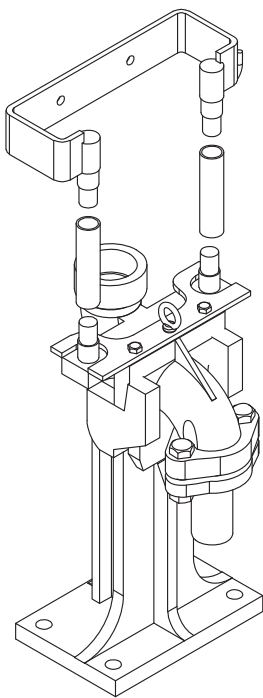
# MODEL 2732HF

## DIMENSIONAL DRAWING

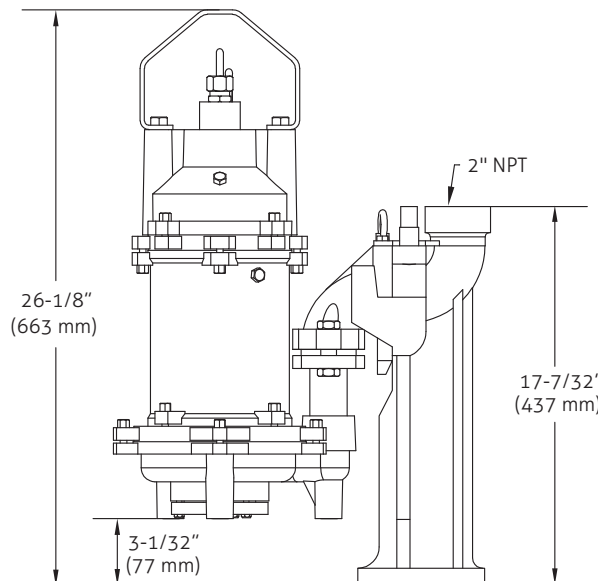
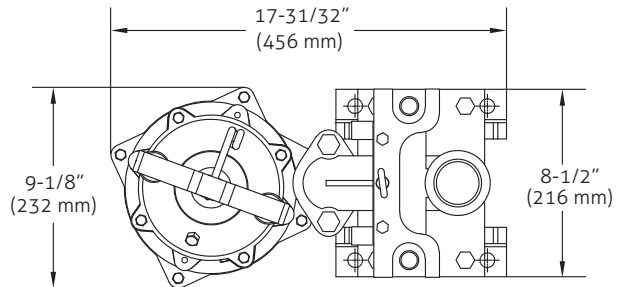
### 2 HP Grinder Pumps



EA0128



**2039-0006**



EA0160