

Product information presented here reflects conditions at time of publication. Consult factory regarding discrepancies or inconsistencies.

MODEL 2701

PRODUCT FEATURES

1 HP Grinder Pumps

60 Hz

visit our web site:
zoellerpumps.com

APPLICATIONS

- Low pressure sewer systems
- High head sewage systems
- Domestic, commercial, wastewater and sewage

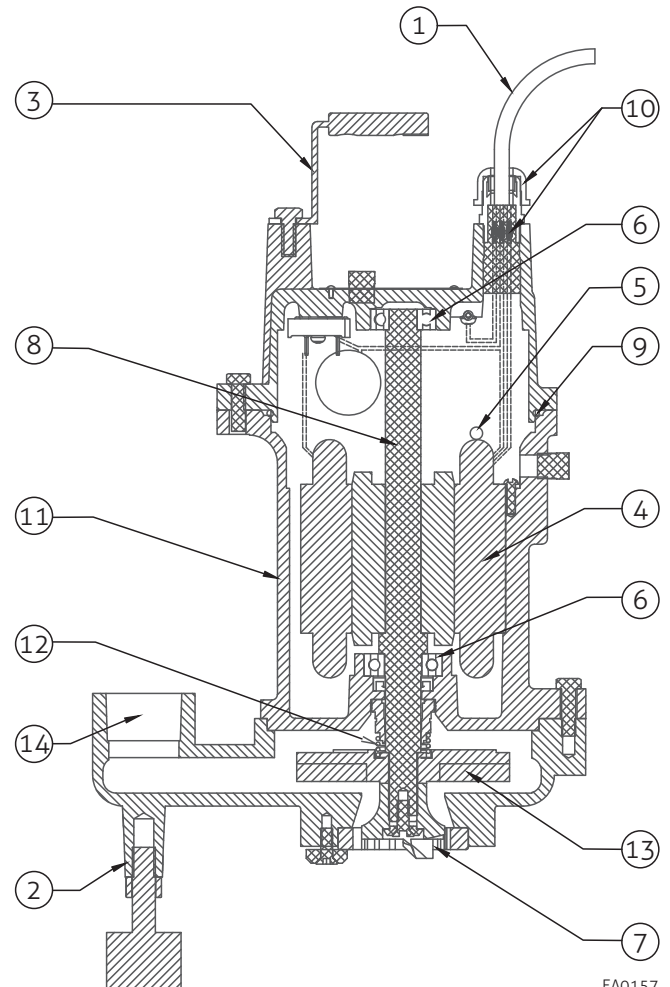
MATERIAL FEATURES

PUMP:

- Hardened 440 stainless steel (Rockwell 55-60) shredding ring and cutter
- 1-1/4" NPT discharge
- Single carbon / ceramic mechanical seal
- Thermal overload is mounted directly on the windings in the single phase models for maximum temperature sensing
- Cast iron ASTM A48 Class 30
- Attaching hardware - 304 stainless steel
- The cord seal is epoxy-potted for superior moisture resistance and anti-wicking
- Ductile iron impeller for superior quality and long life

MOTOR:

- 1 HP, 3450 RPM
- 1 Phase - 115 Volt
- Stator - Class B insulation and lead wires Nema B design
- Oil-filled motor for better cooling and lubrication
- Integral thermal overload
- Housing - cast iron
- Power cord with Nema 5-15P plug - 15' (4.5 m)
- Ball bearings - upper and lower high carbon chromium steel
- Capacitor Start Capacitor Run motor



EA0157

FEATURES

1. 15' (4.5 m) power cord.
2. Cast iron support legs enable the pump to be free-standing.
3. Stainless steel lifting bail.
4. Stator - Class B insulation and lead wires Nema B design. Class B motor insulation is double-dipped and baked.
5. Thermal sensor protection mounted directly on the windings to protect against overheating
6. Upper and lower high carbon chromium steel ball bearings.
7. Stainless steel shredding ring and cutter hardened to Rockwell 55-60.
8. Stainless steel shaft and hardware resist corrosion.
9. Buna-N O ring seals.
10. Triple sealed design compression grommet - outer jacket seal epoxy potted - inner conductor seal.
11. Cast iron ASTM A48 Class 30 strength.
12. Single carbon / ceramic mechanical seal with secondary lip seal.
13. Semi - open vortex impeller design, fully balanced with integral pump-out vane to clear debris.
14. 1-1/4" NPT discharge. Concentric pump housing with centerline discharge reduces radial loading for longer bearing and shaft seal life.

MODEL 2701

TECHNICAL DATA

1 HP Grinder Pumps

| | | | |
|------------------------------------|--------------------------------|---------------------------------|---------------------------------|
| MODELS: | <input type="checkbox"/> N2701 | <input type="checkbox"/> WM2701 | <input type="checkbox"/> BN2701 |
| MODE: | NON-AUTO | AUTO-TETHERED | AUTO-PIGGYBACK |
| PUMP NAME PLATE HORSEPOWER: | 1 | 1 | 1 |
| MAXIMUM KW INPUT: | 1.38 | 1.38 | 1.38 |
| STANDARD IMPELLER DIAMETER: | 3.543" (90 mm) | 3.543" (90 mm) | 3.543" (90 mm) |
| DISCHARGE SIZE: | 1-1/4" NPT | 1-1/4" NPT | 1-1/4" NPT |

| | | | |
|----------------------------|---|---|---|
| IMPELLER TYPE: | SEMI-OPEN | SINGLE SEALS: | STANDARD |
| CUTTER & PLATE: | 440 C SS HARDENED TO ROCKWELL 55-60 | MOTOR DESIGN LETTER: | NEMA B |
| PUMP NET WEIGHT: | N2701 54 lbs. (24.6 kg) WM2701 55 lbs. (24.9 kg) BN2701 56 lbs. (25.4 kg) | POWER CORD LENGTH: ft (m) (15' [4.5 m] STANDARD) | <input type="checkbox"/> 25' (7.6 m) <input type="checkbox"/> 35' (10.7 m) <input type="checkbox"/> 50' (15.2 m) <input type="checkbox"/> N <input type="checkbox"/> WM (W/O PLUG ONLY) |
| O RINGS: | BUNA-N | POWER CORD: | SJTW |
| MOTOR SHAFT: | SS410 | STATOR & LEAD WIRES INSULATION: | CLASS B |
| RPM: | 3450 | MAXIMUM STATOR TEMPERATURE: | 266 °F (130 °C) |
| MOTOR TYPE: | SUBMERSIBLE | | |

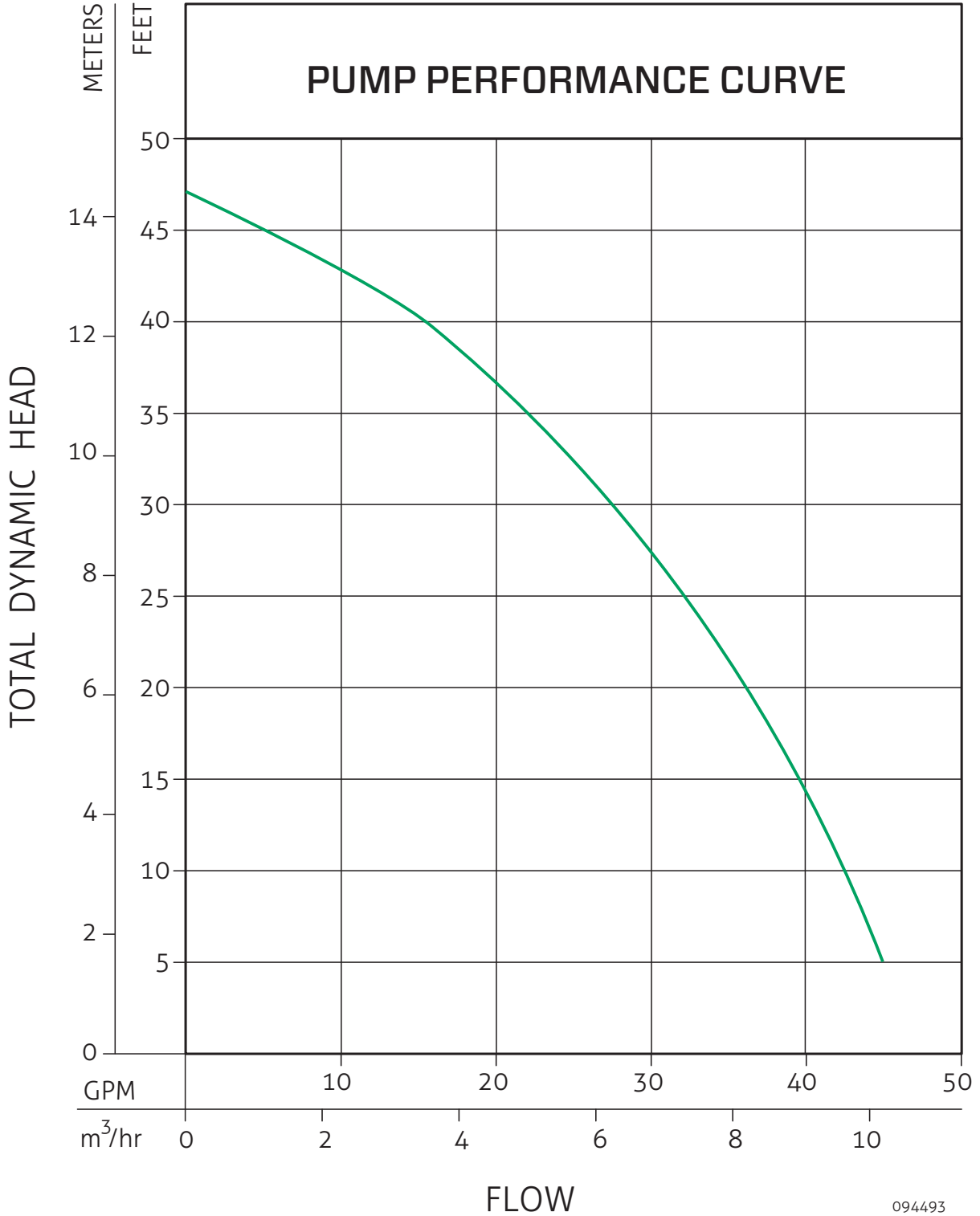
| | | |
|-----------------------------------|------------------------------|--|
| SHAFT SEAL CONSTRUCTION: | STANDARD | CARBON/CERAMIC |
| STANDARD SENSING DEVICES | MOTOR THERMAL SHUTOFF | INTEGRAL ON-LEAD |
| IMPELLER MATERIAL | 2701 | STANDARD DUCTILE IRON |
| MAXIMUM WATER TEMPERATURE: | | 104 °F (40 °C) Continuous, 140 °F (60 °C) Intermittent |

| MODEL | HP | <input type="checkbox"/> 115V / 1 PH | |
|--------|----|--------------------------------------|------|
| | | FLA | LRA |
| N2701 | 1 | 12 | 25.7 |
| WM2701 | 1 | 12 | 25.7 |
| BN2701 | 1 | 12 | 25.7 |

RESERVE POWERED DESIGN

For unusual conditions a reserve safety factor is engineered into the design of every Zoeller® pump.

MODEL 2701
PERFORMANCE CURVE
1 HP Grinder Pumps

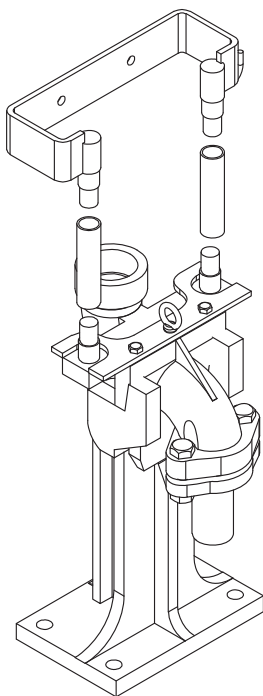
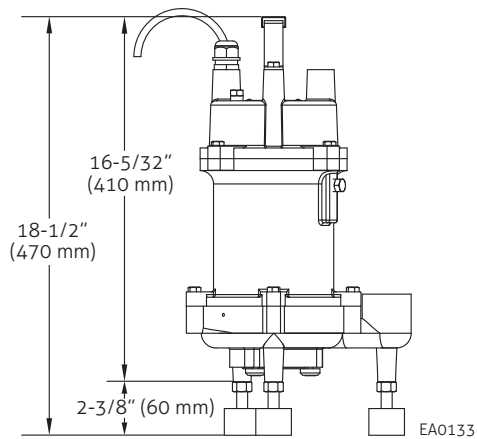
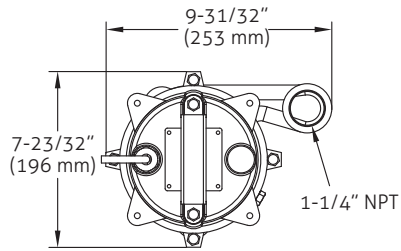


094493

MODEL 2701

DIMENSIONAL DRAWING

1 HP Grinder Pumps



2039-0006

