

Models 49, 70

50 Hz 60 Hz

Submersible Sump Pumps

Features:

- Thermal overload protected motor and cast iron motor housing for long life
- Highly efficient motor, oil-filled for enhanced heat dissipation
- Engineered thermoplastic and stainless steel components provide improved corrosion resistance
- Vent hole prevents air lock
- Non-clogging vortex impeller passes up to 3/8" (9 mm) spherical solids
- Carrying handle for convenient pump placement
- Maximum operating water temperature 104 °F (40 °C)

Applications:

- Wastewater drainage
- Water supply for agriculture irrigation and landscape
- Lake/River water transfer
- Construction site water removal
- Basement water removal

100% factory tested



Trusted. Tested. Tough.®



Non-Automatic

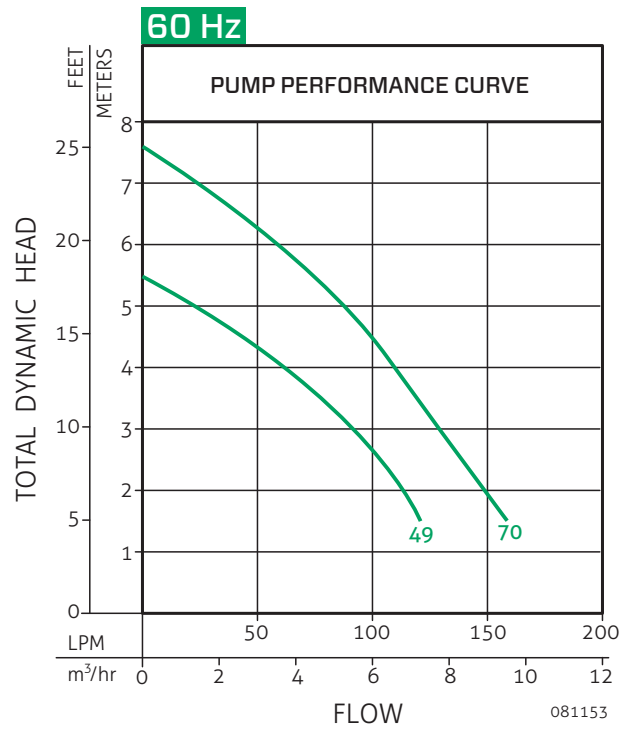
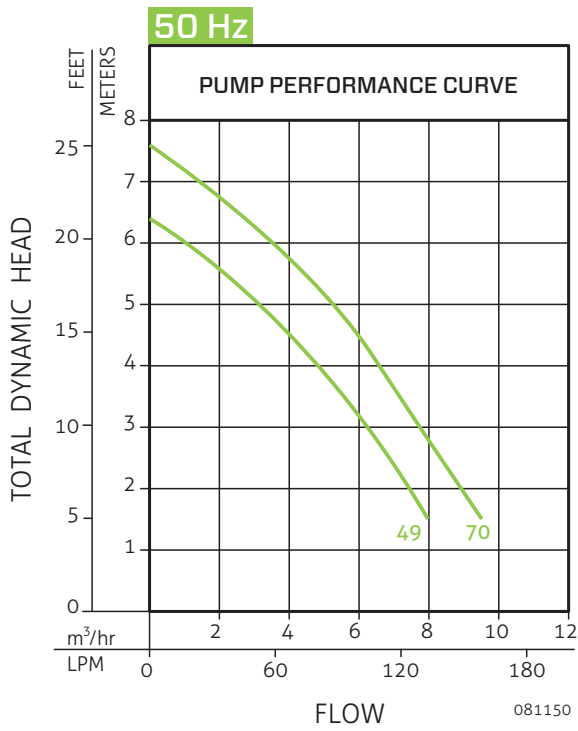


Automatic
(Vertical Switch)



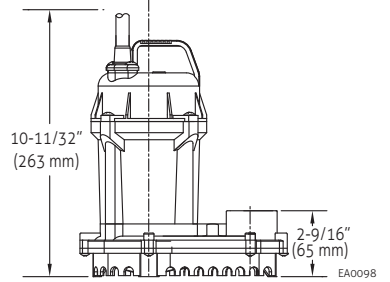
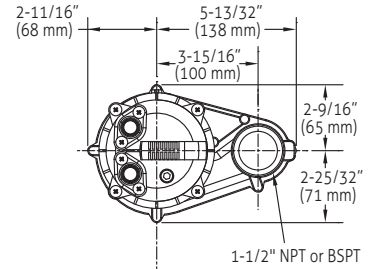
Automatic
(Tethered Switch)

ZT0046_Ec
03/23
Supersedes
1214



50 Hz

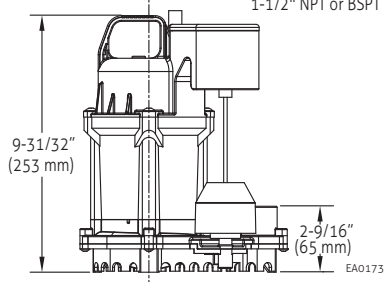
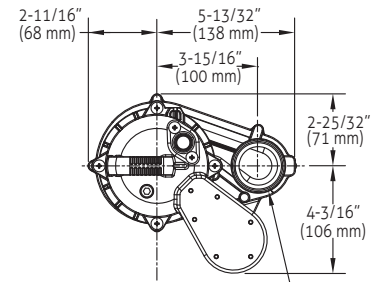
Model	Mode	Volt (V)	Ph Ø	Amps (A)	Motor		Weight		Switch Point			
					kW (p1)	HP	kg	lbs	On		Off	
									inch	mm	inch	mm
V49	Non-Auto	220	1	1.6	0.36	1/4	4.9	10.8	---	---	5/8	15
U49	Auto-Vertical	220	1	1.6	0.36	1/4	5.3	11.7	6-11/16	170	2-3/16	56
WU49	Auto-Tethered	220	1	1.6	0.36	1/4	5.3	11.7	11-1/4	286	4-1/8	105
V70	Non-Auto	220	1	2.2	0.44	1/3	5.1	11.2	---	---	5/8	15
U70	Auto-Vertical	220	1	2.2	0.44	1/3	5.4	11.9	6-11/16	170	2-3/16	56
WU70	Auto-Tethered	220	1	2.2	0.44	1/3	5.4	11.9	11-1/4	286	4-1/8	105



CE *Intended for indoor use only.

60 Hz

Model	Mode	Volt (V)	Ph Ø	Amps (A)	Motor		Weight		Switch Point			
					HP	kW (p1)	kg	lbs	On		Off	
									inch	mm	inch	mm
N49	Non-Auto	115	1	4.0	1/4	0.34	4.9	10.8	---	---	5/8	15
WM49	Auto-Tethered	115	1	4.0	1/4	0.34	5.1	11.2	11-1/4	286	4-1/8	105
E49	Non-Auto	230	1	1.5	1/4	0.36	4.9	10.8	---	---	5/8	15
WD49	Auto-Tethered	230	1	1.5	1/4	0.36	5.1	11.2	11-1/4	286	4-1/8	105
N70	Non-Auto	115	1	5.5	1/3	0.50	5.1	11.2	---	---	5/8	15
WM70	Auto-Vertical	115	1	5.5	1/3	0.50	5.2	11.5	6-11/16	170	2-3/16	56
M70	Auto-Tethered	115	1	5.5	1/3	0.50	5.2	11.5	11-1/4	286	4-1/8	105
E70	Non-Auto	230	1	2.1	1/3	0.52	5.1	11.2	---	---	5/8	15
WD70	Auto-Tethered	230	1	2.1	1/3	0.52	5.2	11.5	11-1/4	286	4-1/8	105



Product information presented here reflects conditions at time of publication. Consult factory regarding discrepancies or inconsistencies.

© Copyright 2023 Zoeller® Co. All rights reserved.
www.zoellerpumps.com

